

THOUGH THE SIZE OF A gear AND B gear IS SO DIFFERENT, WHY THE CYCLE TIME IS THE SAME?

?

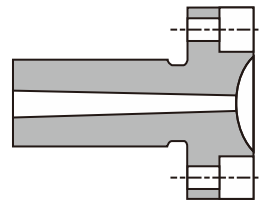
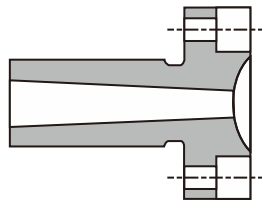
THIS IS BECAUSE, THE SPRUE SIZE IS LARGER THAN PRODUCT.

IN THIS CASE, IT TAKES MORE TIME FOR COOLING THE SPRUE.

A gear Molding condition

B gear Molding condition

IS IT POSSIBLE TO NARROW THE SPRUE DIAMETER?

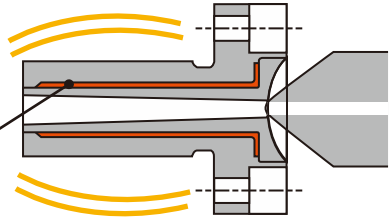


IT IS POSSIBLE, BUT THE LIQUIDITY BECOME WORSE...

Hmm...

LEAVE IT TO ME!!

THERMAL INSULATION STRUCTURE



E.S. SPRUE BUSHING HAS A THERMAL INSULATION STRUCTURE IS NOT LOSE THE HEAT OF THE RESIN TO THE OUTSIDE! EVEN THINNER THE SPRUE DIAMETER, IT IS POSSIBLE TO MAINTAIN THE LIQUIDITY.

WOW!!

MOLDING CYCLE TIME BECOMES MUCH FASTER!!

YES!

36SEC BECOMES 30SEC!

IN 24 HOURS, WE CAN MAKE 480 PRODUCTS MORE! AND THE SPRUE IS NOT BLOCKED!